



WINTERSPORTS 2010 · 11
EYEWEAR

ERGO
ALPINA

EYEWEAR & HELMETS



WINDTUNNEL DESIGN STARK GEWÖLBTE SCHEIBEN UMSCHLIESSEN DAS GESICHT. SIE BIETEN DEM AUGE MEHR SCHUTZ VOR ZUGLUFT UND KÄLTE UND VERBESSERN DIE SICHT. HIGHLY CURVED LENSES SHAPED AROUND THE FACE. THIS AFFORDS BETTER EYE PROTECTION FROM DRAFTS AND THE COLD AND IMPROVES VISIBILITY. **ANPASSBARER NASENSTEG** DER KALT VERFORMBARE NASENSTEG ERMÖGLICHT EINE OPTIMALE ANPASSUNG AN JEDE NASENBREITE. ADAPTABLE NOSEPADS: THE COLD-MOLDABLE NOSEPADS CAN BE ADAPTED OPTIMALLY TO ANY NOSE WIDTH. **ZWEI-KOMPONENTEN-BAUWEISE** DIE KOMBINATION AUS HARTER FASSUNG, WEICHER STIRNAUFLAGE UND WEICHEM NASENPAD VERBESSERT DEN TRAGEKOMFORT UND DEN SITZ DER BRILLE. TWO-COMPONENT DESIGN: THE COMBINATION OF A HARD FRAME, SOFT FOREHEAD REST AND NOSE PAD IMPROVES THE COMFORT AND FIT OF THE GLASSES. **VENTING SYSTEM** DIE GEZIELTE LUFTSTROMFÜHRUNG ÜBER BELÜFTUNGSÖFFNUNGEN VERHINDERT DAS BESCHLAGEN DER SCHEIBEN. CONTROLLED AIR-FLOW DESIGN PROVIDES PROTECTION AGAINST FOGGING OF THE LENSES. **COLDFLEX** KALT VERFORMBARE BÜGELN ENTHALTEN VERBESSERTEN HALT UND SITZ DER BRILLENBÜGEL AN DEN OHREN. COLD MOLDABLE TEMPLETIPS IMPROVE HOLD AND FIT ON THE EARS. **INKLINIERBARE BÜGEL** EIN MEHRFACH IN DER NEIGUNG VERSTELLBARES BÜGELGELENK OPTIMIERT DIE ANPASSUNG DER BRILLE: KIPPEN DER BRILLE ZUR STIRN HIN FÜR ZUGFREIHEIT. ODER KIPPEN DER BRILLE VON DER STIRN WEG FÜR MEHR BELÜFTUNG BZW. BESCHLAGFREIHEIT. ARTICULATED SIDE PIECES FOR MULTIPLE ADJUSTMENT OF THE ANGLE OF INCLINATION OPTIMIZE THE FIT OF THE GLASSES: THE GLASSES CAN BE TILTED TOWARDS THE FOREHEAD TO STOP DRAFTS. OR THEY CAN BE TILTED AWAY FROM THE FOREHEAD FOR BETTER VENTILATION AND FREEDOM FROM FOGGING. **WECHSELSCHEIBEN** MIT AUSWECHSELBAREN SCHEIBEN SIND SIE FÜR JEDE LICHTSITUATION OPTIMAL GERÜSTET. DUNKLE SCHEIBEN SIND BESTENS GEEIGNET BEI STARKER SONNENEINSTRALUNG. ORANGE SCHEIBEN KOMMEN BEI NEBEL, BEWÖLKUNG UND IN DER DÄMMERUNG ZUM EINSATZ. KLARE SCHEIBEN ABSORBIEREN SO GUT WIE KEIN LICHT UND BIETEN TROTZDEM WIE ALLE SCHEIBEN BESTEN SCHUTZ GEGEN UV-STRALUNG, WIND, STAUB UND INSEKTEN. ALLE WECHSELSCHEIBEN WERDEN IN EINEM SCHÜTZENDEN ETUI ZUSAMMEN MIT DER BRILLE AUSGESTATTET. WITH INTERCHANGEABLE LENSES YOU ARE OPTIMALLY EQUIPPED FOR ALL KINDS OF LIGHT SITUATIONS. DARK LENSES ARE EXCELLENT FOR BRILLIANT SUNLIGHT. ORANGE LENSES ARE USED WHEN IT IS FOGGY, CLOUDY AND AT TWILIGHT. CLEAR LENSES ABSORB VIRTUALLY NO LIGHT AT ALL, BUT LIKE ALL LENSES THEY PROVIDE EXCELLENT PROTECTION AGAINST UV RAYS, WIND, DUST AND INSECTS. ALL INTERCHANGEABLE LENSES COME IN A PROTECTIVE CASE WITH THE GLASSES.



HIGH IMPACT CERAMIC LENS TECHNOLOGY

 QUATTROFLEX®	Bruchfest Breakresistant	100% UV-A-, -B-, -C-Schutz bis 400 nm 100% UV-A-, -B-, -C-protection up to 400 nm	Hartbeschichtet Hardcoated	Pol-Filter für überragende Kontrastverstärkung Pol-filter for superior contrast enhancement
 VARIOFLEX®	Bruchfest Breakresistant	100% UV-A-, -B-, -C-Schutz bis 400 nm 100% UV-A-, -B-, -C-protection up to 400 nm	Hartbeschichtet Hardcoated	Autom. Anpassung der Scheibentönung an Lichtintensität Lens color automatically adapts to light intensity
CERAMIC fogstop	Bruchfest Breakresistant	100% UV-A-, -B-, -C-Schutz bis 400 nm 100% UV-A-, -B-, -C-protection up to 400 nm	Hartbeschichtet Hardcoated	Antistatische Fogstop-Beschichtung Antistatic Fogstop Coating
CERAMIC mirror	Bruchfest Breakresistant	100% UV-A-, -B-, -C-Schutz bis 400 nm 100% UV-A-, -B-, -C-protection up to 400 nm	Innen hartbeschichtet Außen verspiegelt Inside hardcoated Frontside mirrored	Absorbiert Infrarotstrahlen Infrared absorption
CERAMIC	Bruchfest Breakresistant	100% UV-A-, -B-, -C-Schutz bis 400 nm 100% UV-A-, -B-, -C-protection up to 400 nm	Hartbeschichtet Hardcoated	

SWING 62 DLQM

QUATTROFLEX® mirror

QUATTROFLEX®

A7562.2.31 frame black matt
base QUATTROFLEX rubyred
lens QUATTROFLEX mirror black



NEW



A7562.2.11
frame white
base QUATTROFLEX rubyred
lens QUATTROFLEX mirror black

COLD FLEX > INKLINIERBARE BÜGEL ADJUSTABLE INCLINATION

SWING 42 DLQM

QUATTROFLEX® mirror

QUATTROFLEX®

A7548.2.12 frame white
base QUATTROFLEX rubyred
lens QUATTROFLEX mirror black



A7548.2.28
frame silver-chrome
base QUATTROFLEX rubyred
lens QUATTROFLEX mirror blue



A7548.2.31
frame black matt
base QUATTROFLEX rubyred
lens QUATTROFLEX mirror black



A7548.2.35
frame black/red matt
base QUATTROFLEX rubyred
lens QUATTROFLEX mirror black



A7548.2.36
frame carbon
base QUATTROFLEX rubyred
lens QUATTROFLEX mirror black

COLD FLEX > INKLINIERBARE BÜGEL ADJUSTABLE INCLINATION

SWING 32 DLQM

QUATTROFLEX® mirror

QUATTROFLEX®

A7537.2.35 frame black/red matt
base QUATTROFLEX rubyred
lens QUATTROFLEX mirror black



A7537.2.12
frame white
base QUATTROFLEX rubyred
lens QUATTROFLEX mirror black



A7537.2.28
frame silver-chrome
base QUATTROFLEX rubyred
lens QUATTROFLEX mirror blue



A7537.2.33
frame black matt
base QUATTROFLEX rubyred
lens QUATTROFLEX mirror black



A7537.2.36
frame carbon
base QUATTROFLEX rubyred
lens QUATTROFLEX mirror black

COLD FLEX

SWING SHIELD 42

CERAMIC mirror

A7547.3.51 frame red metallic
lens black mirror



A7547.3.10
frame white
lens black mirror



A7547.3.25
frame tin
lens lightbrown mirror



A7547.3.31
frame black
lens black mirror

COLD FLEX > INKLINIERBARE BÜGEL ADJUSTABLE INCLINATION

A7563.2.11 frame white
base QUATTROFLEX rubyred
lens black



COLDFLEX INKLINIERBARE BÜGEL ADJUSTABLE INCLINATION



A7563.2.21
frame silver-chrome
base QUATTROFLEX rubyred
lens black



A7563.2.231
frame black matt
base QUATTROFLEX rubyred
lens black

A7549.2.33 frame black/white scratch
base QUATTROFLEX rubyred
lens black



COLDFLEX INKLINIERBARE BÜGEL ADJUSTABLE INCLINATION



A7549.2.11
frame white
base QUATTROFLEX rubyred
lens black



A7549.2.29
frame silver-chrome
base QUATTROFLEX rubyred
lens black



A7549.2.31
frame black matt
base QUATTROFLEX rubyred
lens black



A7549.2.93
frame nougat/sisal-chrome
base QUATTROFLEX rubyred
lens black

A7538.2.21 frame silver-chrome
base QUATTROFLEX rubyred
lens black



COLDFLEX INKLINIERBARE BÜGEL ADJUSTABLE INCLINATION



A7538.2.11
frame white
base QUATTROFLEX rubyred
lens black



A7538.2.31
frame black matt
base QUATTROFLEX rubyred
lens black



A7538.2.33
frame black/white scratch
base QUATTROFLEX rubyred
lens black



A7538.2.52
frame viola
base QUATTROFLEX rubyred
lens black



A7538.2.93
frame nougat/sisal-chrome
base QUATTROFLEX rubyred
lens black

A7536.3.52 frame viola
lens black mirror



COLDFLEX INKLINIERBARE BÜGEL ADJUSTABLE INCLINATION



A7536.3.10
frame white
lens black mirror



A7536.3.25
frame tin
lens lightbrown mirror



A7536.3.31
frame black
lens black mirror



A7536.3.51
frame red metallic
lens black mirror

TRANSMISSION S 0 = 80-100 % S 1 = 43-80 % S 2 = 18-43 % S 3 = 8-18 % S 4 = 3-8 %

	UATROFLEX® RUBYRED/RED	Mittlere Tönung für alle Lichtverhältnisse, Kontrasterkennung durch Polarisationsfilter, mittlerer Lichtschutz. Dark tint for all light conditions; polarization filter for contrast detection IR protection, high light protection factor.	S 2
	UATROFLEX® mirror BLACK/BLUE	Dunkle Tönung für alle Lichtverhältnisse, Kontrasterkennung durch Polarisationsfilter, IR-Schutz, hoher Lichtschutz. Dark tint for all light conditions; polarization filter for contrast detection, IR protection, high light protection factor.	S 3
	VARIOFLEX® ORANGE/BLACK	Selbsttönend, passt sich den Lichtverhältnissen an, aufhellend, mittlerer bis hoher Lichtschutz. Self-tinting/photochromic; adapt to light conditions; brightening factor; medium/high protection factor.	S 1-2 S 2-3
	CERAMIC logstop ORANGE	Mittlere Tönung für alle Lichtverhältnisse, stark aufhellend/kontrastverstärkend, mittlerer Lichtschutz, beschlagfrei. Dark tint for all light conditions; strong brightening factor/enhanced contrast detection, medium light protection factor, clear.	S 2
	CERAMIC CLEAR	Für schlechte Lichtverhältnisse/Abendstunden, als Mückenschutz, geringer Lichtschutz. For poor light conditions/the evening; mosquito protection, low light protection factor.	S 0
	CERAMIC BLACK GRAD./BROWN GRAD./GREEN GRAD./RED GRAD.	Mittlere Tönung für alle Lichtverhältnisse, modische Verlauffarben von dunkel bis hell. Medium tint for all light conditions; fashionable colour gradient from dark to bright tint.	S 2/3
	CERAMIC ORANGE	Mittlere Tönung für alle Lichtverhältnisse, stark aufhellend/kontrastverstärkend, mittlerer Lichtschutz. Dark tint for all light conditions; strong brightening factor/enhanced contrast detection, medium light protection factor.	S 2
	CERAMIC BLACK/GREEN/BROWN	Dunkle Tönung für alle Lichtverhältnisse, hoher Lichtschutz. Dark tint for all light conditions; high light protection factor.	S 3
	CERAMIC mirror CLEAR	Leichte Verspiegelung für schlechte Lichtverhältnisse/Abendstunden, IR-Schutz, geringer Lichtschutz. Slight mirror effect for poor light conditions/the evening; IR protection, low light protection factor	S 1
	CERAMIC mirror BLUE/BLACK/PLATINUM/GOLD/Black Grad.	Starke Verspiegelung für intensives Licht, IR-Schutz, hoher Lichtschutz. Strong mirror effect for intense light; IR protection, high light protection factor.	S 3/4
	CERAMIC mirror ORANGE/ LIGHT BROWN/LIGHT BLUE	Leichte Verspiegelung, ideale Allwetterverglasung, kontrastverstärkend, IR-Schutz, mittlerer Lichtschutz. Slight mirror effect, ideal all-weather lenses, contrast enhancement, IR protection, medium light protection factor.	S 2
	CERAMIC mirror MULTICOLOR	Starke Verspiegelung für alle Lichtverhältnisse, stark aufhellend/kontrastverstärkend, IR-Schutz, hoher Lichtschutz. Strong mirror effect for all light conditions; strong brightness/contrast enhancement, IR protection, high light protection factor.	S 3

Alle Scheiben bieten in allen Farben und Tönungen 100% UV-Schutz und sind straßenverkehrstauglich nach **Norm CE EN 1836:2005 + A1:2007**.
All lenses and lens colours have 100 % UV protection and are suitable for use in traffic due to **CE EN 1836:2005 + A1:2007 standard**.

A8341.5.10 frame white
lens QUATTROFLEX mirror black



A8341.5.25
frame anthracite
lens QUATTROFLEX red

ANPASSBARER NASENSTEG ADAPTABLE NOSEPADS INKLINIERBARE BÜGEL ADJUSTABLE INCLINATION

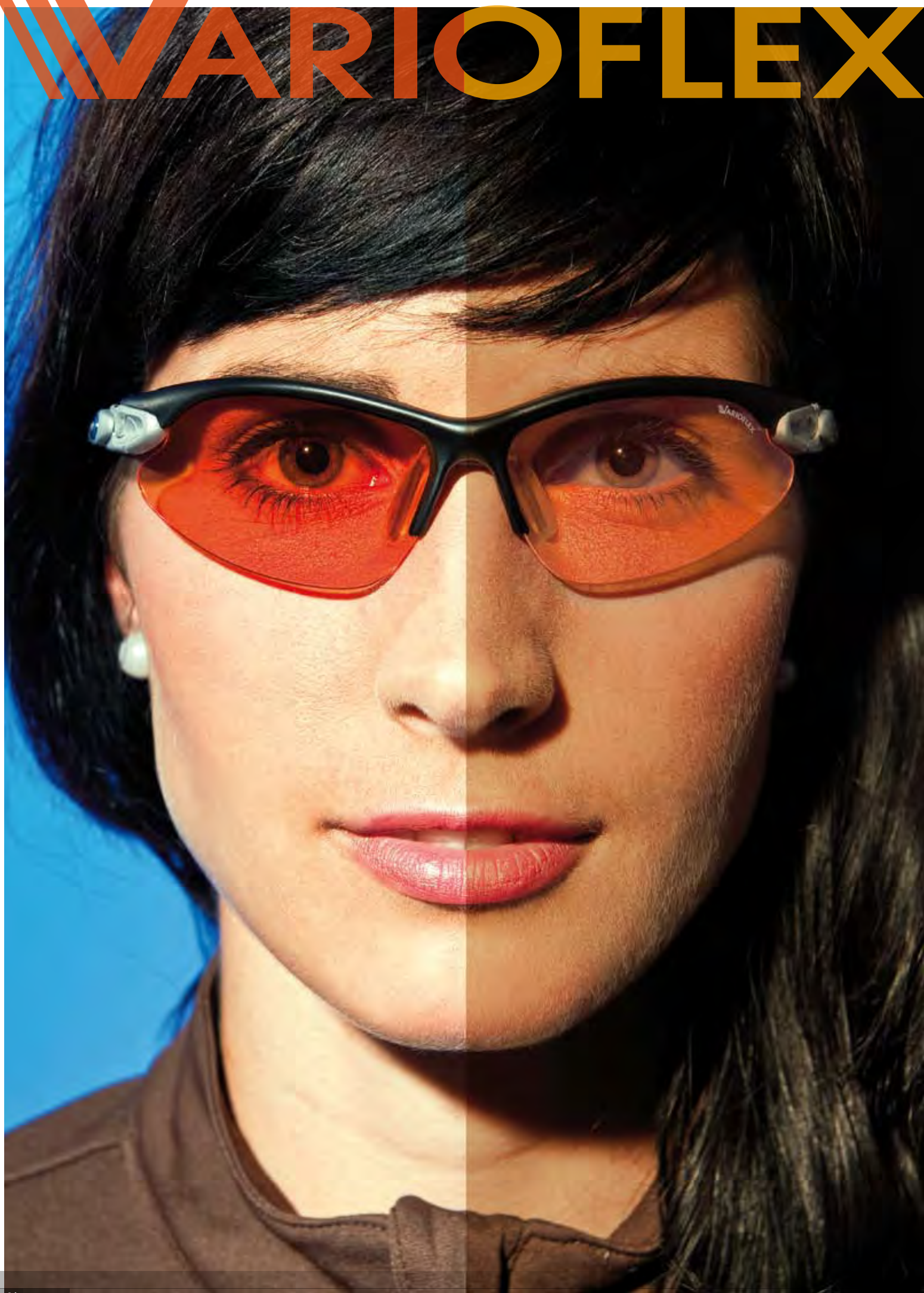
A8408.5.31 frame black matt
lens QUATTROFLEX red



A8408.5.10
frame white matt
lens QUATTROFLEX mirror black



WARIOFLEX



A8240.1.33 frame black matt
lens VARIOFLEX orange matt

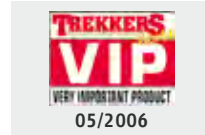


A8240.1.23
frame tin
lens VARIOFLEX black



SMALL SIZE > INKLINIERBARE BÜGEL ADJUSTABLE INCLINATION > ANPASSBARER NASENSTEG ADAPTABLE NOSEPADS

A8241.1.25 frame tin
lens VARIOFLEX black



A8241.1.33
frame black matt
lens VARIOFLEX orange



INKLINIERBARE BÜGEL ADJUSTABLE INCLINATION > ANPASSBARER NASENSTEG ADAPTABLE NOSEPADS

A8393.1.25 frame tin
lens VARIOFLEX orange



A8393.1.10
frame white
lens VARIOFLEX black



A8393.1.31
frame black
lens VARIOFLEX black



ANPASSBARER NASENSTEG ADAPTABLE NOSEPADS

A8386.1.28 frame black-silver stripes
lens VARIOFLEX black



A8386.1.10
frame white matt
lens VARIOFLEX black



A8386.1.25
frame anthracite matt
lens VARIOFLEX black



A8386.1.31
frame black matt
lens VARIOFLEX orange



TWIST STYLE

CERAMIC mirror CERAMIC CERAMIC fogstop

A8441.0.21 frame silver
lens black mirror
+ fogstop orange + clear



A8441.0.31
frame black
lens black mirror
+ fogstop orange + clear



INCLUSIVE CASE

CHANGEABLE LENS SYSTEM > INKLINIERBARE BÜGEL ADJUSTABLE INCLINATION > ANPASSBARER NASENSTEG ADAPTABLE NOSEPADS

TRI-PRAFFIX 3.0

CERAMIC mirror

A8397.3.10 frame white matt
lens light mirror + black mirror + orange mirror



A8397.3.25
frame tin matt
lens black mirror
+ light mirror + orange mirror



A8397.3.31
frame black matt
lens black mirror
+ light mirror + orange mirror



INCLUSIVE CASE

CHANGEABLE LENS SYSTEM

TRI-GUARD 40

CERAMIC mirror CERAMIC

A8291.3.31 frame black
lens orange mirror + clear + black mirror



A8291.3.25
frame tin
lens black mirror
+ clear + orange mirror



INCLUSIVE CASE

CHANGEABLE LENS SYSTEM > COLD FLEX



TRI-LINES

CERAMIC mirror CERAMIC

A8234.3.25 frame tin
lens orange mirror + clear + black mirror



A8234.3.35
frame black matt
lens black mirror
+ clear + orange mirror



INCLUSIVE CASE

CHANGEABLE LENS SYSTEM

A8398.3.10 frame white
lens black mirror + clear + orange mirror



A8398.3.25
frame tin matt
lens orange mirror
+ clear + black mirror



A8398.3.31
frame black matt
lens black mirror
+ clear + orange mirror



INCLUSIVE CASE



CHANGEABLE LENS SYSTEM

A8409.3.31 frame black matt
lens multicolor mirror



A8409.3.21
frame tin
lens black mirror

HELMSTAUGLICH FIT FOR WEAR WITH HELMET SOFT FOAM GESICHTSAUFLAGE SOFTFOAM FACE OVERLAY

A8391.3.21 frame tin matt
lens blue mirror



A8391.3.10
frame white matt
lens black mirror



A8391.3.31
frame black matt
lens black

A8389.3.12 frame white-grey matt
lens black mirror



A8389.3.25
frame grey-deco matt
lens multicolor mirror



A8389.3.31
frame black matt
lens platinum mirror

GUARD SHIELD

CERAMIC mirror CERAMIC

A8366.3.25 frame tin-red matt
lens black mirror



COLDFLEX



A8366.3.10
frame white-cyan matt
lens blue mirror



A8366.3.31
frame black-white matt
lens black mirror



A8366.4.10
frame white-red
lens black

AMIX

CERAMIC mirror CERAMIC

A8380.3.10 frame white
lens black mirror



A8380.3.21
frame tin
lens blue mirror



A8380.3.91
frame brown
lens platinum mirror



A8380.4.31
frame black
lens black

ALPINA PROFI

CERAMIC mirror CERAMIC

A8405.3.01 frame gold
lens platinum mirror



A8405.3.25
frame anthracite
lens black mirror



A8405.3.31
frame black matt
lens black mirror



A8405.4.10
frame white matt
lens black

SECURITY

CERAMIC mirror CERAMIC

A8217.3.31 frame black transparent
lens platinum mirror



A8217.3.11
frame white
lens black mirror



A8217.3.24
frame silver transparent
lens orange mirror



A8217.4.25
frame gun
lens black



A8217.4.91
frame brown transparent
lens brown gradient

A8355.3.25 frame silver-black
lens orange mirror



A8355.4.10
frame white
lens black



A8355.3.27
frame tin
lens black mirror



A8355.3.31
frame black
lens platinum mirror

A8407.4.31 frame black
lens black



A8407.3.10
frame white
lens black mirror



A8407.3.25
frame tin
lens orange mirror



A8407.3.85
frame black deco
lens black mirror



A8407.3.91
frame brown
lens platinum mirror

A8388.3.91 frame brown matt
lens platinum mirror



A8388.3.25
frame tin
lens black mirror



A8388.3.10
frame white
lens black mirror



A8388.4.31
frame black matt
lens black

A8371.3.21 frame silver
lens orange mirror



A8371.3.23
frame silver
lens black mirror



A8371.3.22
frame platinum
lens platinum mirror



A8371.3.31
frame black
lens black mirror



A8371.4.51
frame red
lens black

FIBER 40

CERAMIC mirror CERAMIC

A8030.3.26 frame gun
lens orange mirror



A8030.4.10
frame white
lens black



A8030.3.27
frame carbon
lens black mirror



A8030.4.31
frame black matt
lens black

KHELOS

CERAMIC mirror CERAMIC

A8402.4.10 frame white
lens black



A8402.3.21
frame silver
lens black mirror



A8402.3.25
frame tin
lens orange mirror



A8402.3.31
frame black matt
lens platinum mirror

CRUNCH

CERAMIC mirror CERAMIC

A8206.4.35 frame black matt
lens black



A8206.3.35
frame black
lens orange mirror



A8206.3.91
frame brown transparent
lens gold mirror



A8206.4.10
frame white matt
lens black



A8206.3.27
frame tin
lens black mirror

LAXX

CERAMIC mirror CERAMIC

A8395.4.51 frame red
lens black



A8395.3.10
frame white matt
lens black mirror



A8395.3.28
frame anthracite matt
lens black mirror



A8395.3.31
frame black
lens platinum mirror



A8395.3.25
frame tin
lens orange mirror

A8369.3.35 frame black matt
lens platinum mirror



A8369.3.25
frame tin matt
lens orange mirror



A8369.3.27
frame tin matt
lens black mirror



A8369.3.91
frame brown transparent
lens gold mirror



A8369.4.10
frame white matt
lens black

A8310.3.25 frame tin
lens orange mirror



A8310.3.21
frame silver
lens black mirror



A8310.3.31
frame black
lens platinum mirror



A8310.4.10
frame white
lens black

SMALL SIZE

A8403.4.51 frame red
lens black



A8403.3.21
frame silver
lens orange mirror



A8403.3.25
frame tin
lens black mirror



A8403.3.31
frame black matt
lens platinum mirror



A8403.4.10
frame white
lens black

A8354.3.25 frame tin matt
lens orange mirror



OVER THE GLASSES



A8354.4.31
frame black transparent
lens black

HIMALAYA

GLACIER EDITION

CERAMIC mirror

A8063.3.25 frame anthracite
lens platinum mirror



A8063.3.31
frame black
lens black mirror

PROTECTION LEVEL S4 COLD FLEX

CRUNCH MT

GLACIER EDITION

CERAMIC mirror

A8266.3.25 frame tin
lens black mirror



A8266.3.31
frame black
lens black mirror



inclusive case
and head band

PROTECTION LEVEL S4

OVERVIEW MT

GLACIER EDITION

CERAMIC mirror

A8354.3.35 frame black transparent
lens black mirror



OVER THE GLASSES



inclusive case

PROTECTION LEVEL S4

SIBIRIA

GLACIER EDITION

CERAMIC mirror

A8316.3.21 frame silver
lens black mirror



A8316.3.31
frame black
lens black mirror

PROTECTION LEVEL S4



SPORTS WINNIE KIDS

CERAMIC mirror CERAMIC

A8227.3.81
frame light blue matt
lens blue mirror



A8227.3.31
frame black matt
lens black mirror



A8227.4.55
frame pink matt
lens black

SPORTS BONNIE KIDS

CERAMIC mirror CERAMIC

A8228.4.31
frame black matt
lens black



A8228.3.85
frame blue matt
lens black



A8228.4.51
frame red matt
lens black

RACER II KIDS

CERAMIC mirror CERAMIC

A8350.3.10 frame white matt
lens black mirror



COLDFLEX



A8350.3.23
frame gun
lens black mirror



A8350.4.51
frame red
lens black

WOLFY KIDS

CERAMIC mirror CERAMIC

A8353.3.31 frame black matt
lens black mirror



COLDFLEX



A8353.3.81
frame blue matt
lens blue mirror



A8353.4.55
frame orange matt
lens black

RIKKI KIDS

CERAMIC mirror CERAMIC

A8312.4.51 frame red-orange
lens black



A8312.3.55
frame violet-rose
lens black mirror



A8312.3.81
frame blue-clear
lens blue mirror

CERAMIC mirror

CERAMIC

KIDS

CHICO

A8158.4.10 frame white matt
lens black



A8158.3.23
frame gun
lens black mirror



A8158.4.55
frame rose matt
lens black gradient

CERAMIC mirror

CERAMIC

KIDS

ZILLY

A8314.4.51 frame red flowers
lens black



A8314.3.35
frame black
lens black mirror



A8314.4.21
frame silver flowers
lens black

CERAMIC mirror

CERAMIC

KIDS

PEPPY

A8315.3.81 frame blue flowers
lens black mirror



A8315.3.21
frame silver
lens black mirror



A8315.4.51
frame red flowers
lens black

CERAMIC mirror

CERAMIC

KIDS

TUSSI

A8313.4.58 frame pink-purple
lens black gradient



A8313.3.21
frame silver-clear
lens black mirror



A8313.4.91
frame havana
lens brown gradient

CERAMIC mirror

CERAMIC

KIDS

BIBBO

A8404.4.10 frame white matt
lens black



A8404.3.31
frame black matt
lens black mirror



A8404.3.55
frame pink matt
lens black mirror



DISPLAYS



Helmetdisplay 41 pcs
A0002.0.28
230 x 90 x 90 cm
incl. 41 metal hooks
and mirror



Sportsglasses Board
for Helmetdisplay 41 pcs
A0002.0.39
for 12 sportsglasses

HELMET PRESENTER



Helmet Presenter
A0002.0.38
31 x 15 x 20 cm

HELMET HOOK



Helmet Hook
for Spacewall
A0002.0.31

**Sunglasses Display
for 68 pcs**
A0002.0.34
186 x 40 x 40 cm
incl. mirror



**Counterdisplay
for 14 pcs**
A0002.0.37
66 x 23 x 23 cm
incl. mirror



**Counterdisplay
for 8 pcs**
A0002.0.36
68 x 23 x 23 cm
incl. mirror



**Counterdisplay
QUATTROFLEX
for 8 pcs**
A0002.0.40
68 x 23 x 23 cm
incl. mirror and
QUATTROFLEX tester

UNDERCOVER SET

**Head Cover Ski Set
24 pcs**

A9499.9.12
12 x S
12 x L

A9499.9.20
24 x S



COOL KIDS SET



**Cool Kids Set
24 pcs**
A8999.9.79
assorted colors
inclusive display

INTERNATIONAL DISTRIBUTORS

AUSTRIA

ALPINA Eyewear & Helmets
GmbH & Co.KG
Neudaugasse 333
5741 Neukirchen
ph: +43-6565-6890-0
fax: +43-6565-6890-4
office@alpina-sports.at
www.alpina-sports.at

SWITZERLAND

ALPINA Optik+Sport AG
Lohwisstrasse 42
8123 Ebmatingen
ph: +41-43-3662060
fax: +41-44-9801916
info@alpinasport.ch
www.alpinasport.ch

ITALY

Socrep S.R.L.
Via Arnaria 13
39046 Ortisei (BZ)
ph: +39-0471-79 70 22
fax: +39-0471-79 86 51
info@socrep.it
www.socrep.it

SLOVENIA

Asa Naklo d.o.o.
Pivka 15a
4202 Naklo
ph: +386-4-27 70 800
fax: +386-4-27 70 801
info@asa.si
www.asa.si

BENELUX

Olympic Sportswear
Steenweg 85
3890 Gingelom
ph: +32-11-88 23 16
fax: +32-11-88 23 44
info@olympic-sportswear.com
www.olympic-sportswear.com

BULGARIA · SERBIA · CROATIA

Sport Depot
Business Park Sofia
1766 Sofia
ph: +3592-976 45 01
fax: +3592-976 45 45
sales@sportdepot.bg
www.sportdepot.bg

CANADA

AMH Sports Inc.
4052 Alfred Laliberté
Boisbriand QC
J7H 1P8
ph: 001/877430-6120
fax: 001/450430-6120
info@amhsports.ca
www.amhsports.ca

CZECH REPUBLIC

Sprint spol. s r.o.
Becovská 1083/3
104 00 Praha-Uhrineves
ph: +420- 267 710 648
fax: +420- 267 710 092
obchodni@sprintcz.cz
www.sprintcz.cz

DENMARK · SWEDEN

Helen Engström
Sportswear ApS
Malling Bjergetvej 78
8340 Malling
ph: +45-86-93 14 44
fax: +45-86-93 14 88
tt@he-sport.dk

FINLAND

IsMove Oy
Karhunevantie 1
00890 Helsinki
ph: +358-400 572 152
fax: +358-927 88 360
ismo.vaananen@netmail.fi

FRANCE

O2D
rue du Louvasset
38500 Voiron
ph.: +33-4 76 67 05 11
fax: +33-4 76 05 96 01
service-o2d@wanadoo.fr

HUNGARY

Hefa Sport Kft.
Fenyves u. 21
8200 Veszprem
ph: +36-88-591 031
fax: +36-88-422 244
hefa@hefa.hu
www.hefa.hu

NORWAY

SportsXtra AS
Lonningflaten 32 A
5258 Blomsterdalen
ph: +47-55-100-355
fax: +47-55-100-357
post@sportsxtra.no
www.sportsxtra.no

POLAND

Sport-Elite sp. z. o. o.
ul.Bema 57a
01-244 Warszawa
ph: +48-22-837 44 74
fax: +48-22-837 44 89
sekretariat@sport-elite.pl
www.sport-elite.pl

RUSSIA

Alpine-Trade
Verhnaya Pervomayskaya 49, Bld. 2
105264 Moscow
ph: +7-495-788 12 48
fax: +7-495-788 12 44
info@alpine-trade.ru
www.alpina-eyewear.ru

SLOVAKIA

Kutik - obchodna firma
Jakub - Novy Svet 41
974 01 Banska Bystrica
ph: +421-48-428 5313
fax: +421-48-428 5281
kutik.juraj@kutiksport.sk
www.kutiksport.sk

UNITED KINGDOM

Laminvale Ltd.
Lodge Farm Offices, Barkstone Lane
Bottesford, Nottingham NG13 0DH
ph: +44-1949-84 48 71
fax: +44-1949-84 48 72
office@samanthahamson.co.uk
www.samanthahamson.co.uk

MEDIENDATENBANK MEDIA DATABASE

Auf unserer Mediendatenbank finden Sie alle Produktabbildungen und Imagebilder dieses Kataloges in druckfähiger Qualität sowie PDF-Dokumente aller Kataloge und Pressetexte. Dieser Download-Service steht Ihnen rund um die Uhr mit gesicherter SSL-Verbindung zur Verfügung. Das Herunterladen ist für Sie kostenfrei. Registrieren Sie sich bitte unter: <http://media.alpina-sports.de>

Auf unserer Mediendatenbank finden Sie alle Produktabbildungen und Imagebilder dieses Kataloges in druckfähiger Qualität sowie PDF-Dokumente aller Kataloge und Pressetexte. Dieser Download-Service steht Ihnen rund um die Uhr mit gesicherter SSL-Verbindung zur Verfügung. Das Herunterladen ist für Sie kostenfrei. Registrieren Sie sich bitte unter: <http://media.alpina-sports.de>

PHOTOGRAPHERS © PAGES

Ciril Jazbec, www.ciriljazbec.com · 18
dpa, www.picture-alliance.de · 22, 23
Franz Faltermaier, www.photo-ff.de · 32, 45, 60/61
Josef Mallaun / Snow Lindinger · 33
Klaus Fengler / Sporthaus Schuster, www.klausfengler.de, 37
Ulrich Weinert, www.freeride-college.com · 8, 15
Ben Wiesenfarth, www.ben-fotodesign.de · Cover, 2, 3, 5, 19, 26, 55
Hermann Weber, www.webereye.de · product shooting

RIDER: ANDREAS PRIELMAIER
LOCATION: GULMARG/KASCHMIR